

MANAGED SWITCHES WITH REMOTE ACCESS

TREE M-4TX, TREE M-6TX AND TREE M-5TX IP67

Murrelektronik has expanded its TREE switch product line in the IP20 and IP67 area with managed switches. They enable reliable internet-based remote access to machines and systems through VPN.

Our managed switches have an implemented open VPN client that automatically connects to the VPN server of the system network. The switches are preconfigured for PROFINET and are delivered with LLDP and DCP enabled. This maintains a consistent and easy-to-monitor topology in your network. With the supported versions of the Simple Network Management Protocol (SNMP v1, v2c, and v3) and with LLDP enabled, the topology can be monitored through SNMP traps.



DECISIVE ADVANTAGES

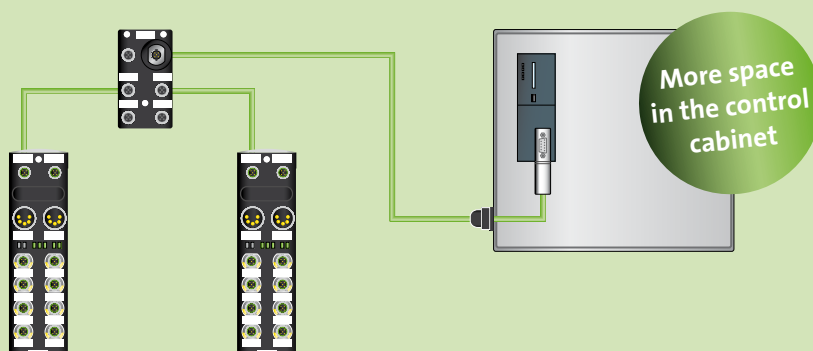
- OPEN VPN – encrypted remote access
- HTTPS – secure web server
- LLDP topology management

MANAGEMENT AND DIAGNOSTICS

- VLAN prioritization (QoS IEE 802.1q)
- SNMP v1, v2c and v3 / Traps
- OPEN VPN client
- RSTP, LLDP, DCP, NTP
- Mirror port – flexible monitoring settings
- TX6 version with external relay for monitoring



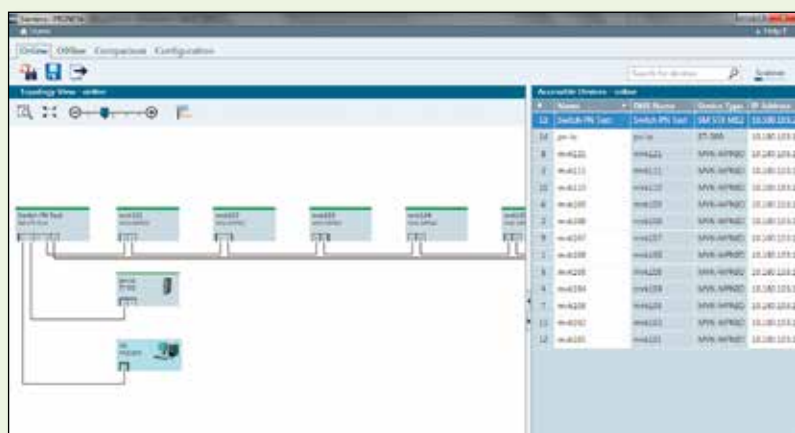
IP67 MANAGED SWITCH – EXTREMELY COMPACT



Small switch glossary

RSTP	Rapid Spanning Tree Protocol
LLDP	Link Layer Discovery Protocol
VPN	Virtual Private Network
DCP	Dynamic Configuration Protocol
NTP	Network Time Protocol

COMPACT



LLDP*

Link Layer Discovery Protocol

– Identification of neighbors

DCP Client*

Discovery and Configuration Protocol

– Assigns IP address and name

* Ready for Profinet



Order data			
Art. no.	58180	58181	58182
Designation	TREE M-5TX IP67	TREE M-4TX	TREE M-6TX
Connections			
Ethernet, Profinet, Ethernet-IP	5 x M12, D-coded	4 x RJ-45	6 x RJ-45
Supply voltage	1 x 24 V via M12, A-coded	2 x 24 V via MSTBO 2.5/4-G1R	2 x 24 V via MSTBO 2.5/4-G1R
Reverse polarity protection	yes	yes	yes
Relay	no	no	yes (MSTBO 2.5/4-G1R)
Technical Data			
Operating voltage	+9.5...31.5 V	9,5...31,5V	9,5...31,5V
Max. power consumption	3 W	2.5 W	3 W
Transfer rate	10/100 Mbits/s	10/100 Mbits/s	10/100 Mbits/s
Operating modes	Autocrossing/Autonegotiation	Autocrossing/Autonegotiation	Autocrossing/Autonegotiation
General data			
Protection	IP67	IP20	IP20
Housing	Black plastic	Black plastic	Black plastic
Fastening method	3-hole screw connection	Mounting rail DIN EN 50022	Mounting rail DIN EN 50022
Temperature range/operation	0...+60 °C	0...+60 °C	0...+60 °C
Temperature range/storage	-40...+85 °C	-40...+85 °C	-40...+85 °C
Dimensions H x W x D (mm)	105 x 60 x 30	22,5 x 99 x 111	45 x 99 x 111
Weight	approx. 250 g	approx. 130 g	approx. 250 g
Max. operating altitude	3000 m	3000 m	3000 m
Shock/vibration	30g/10g	15g/1g	15g/1g